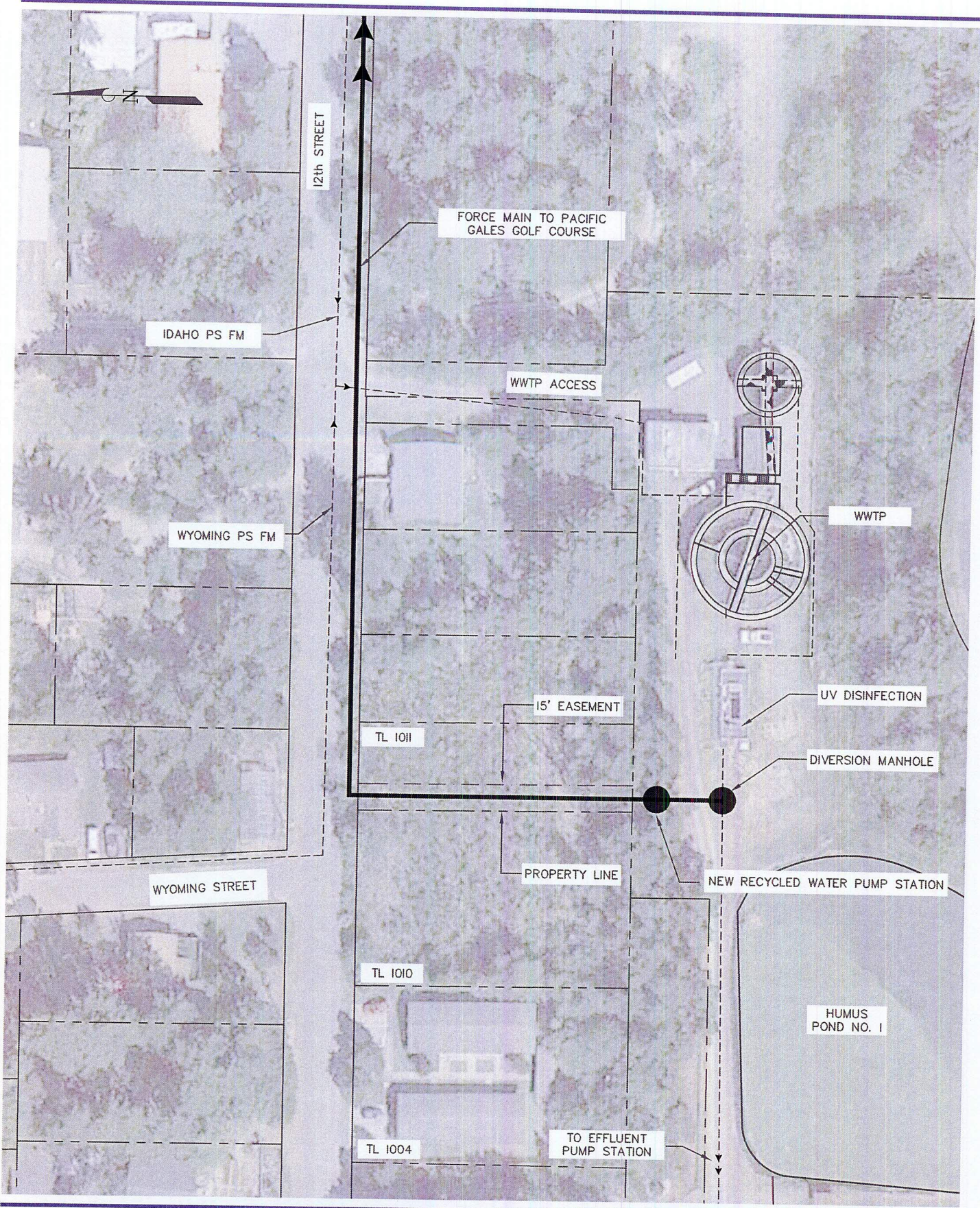
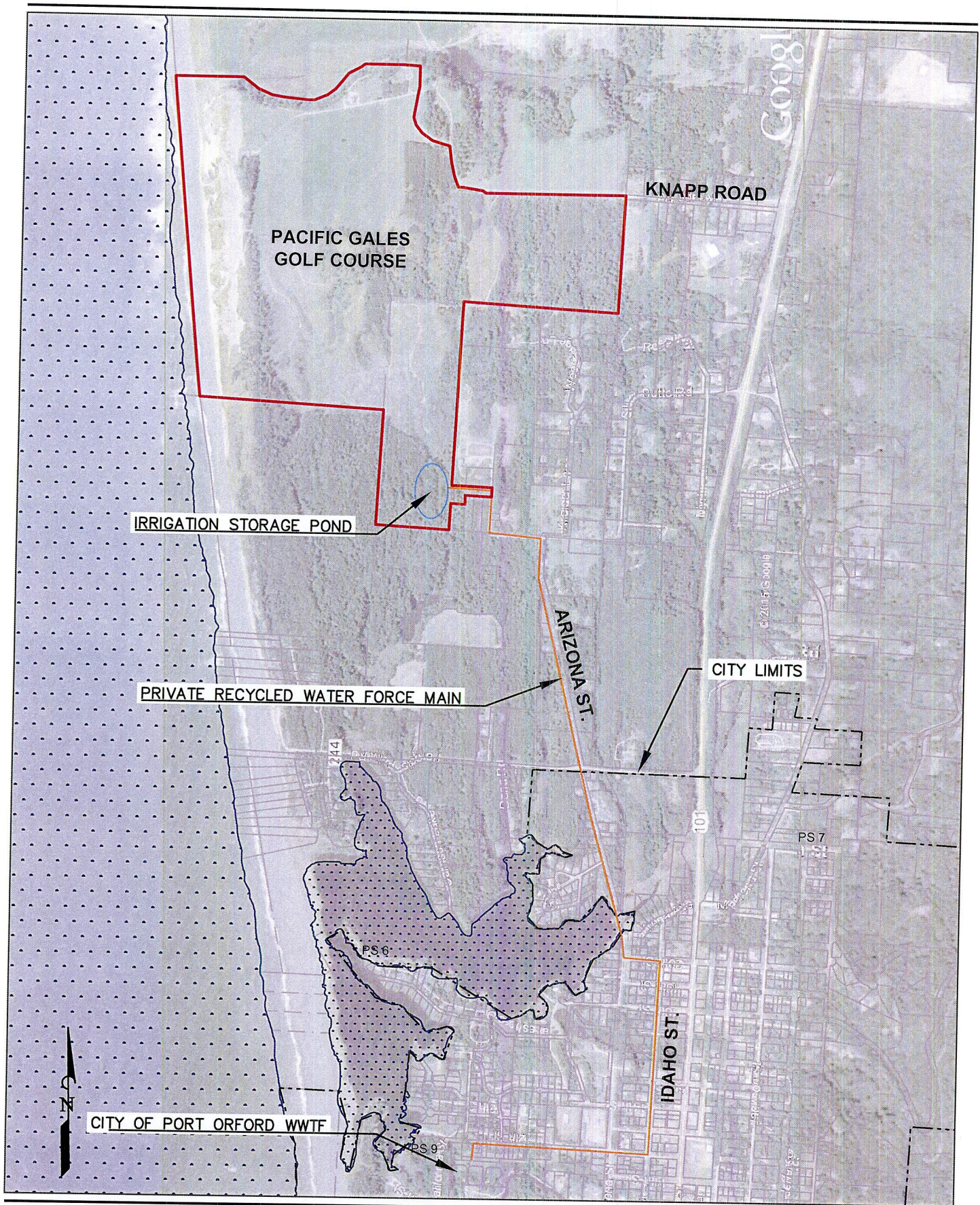


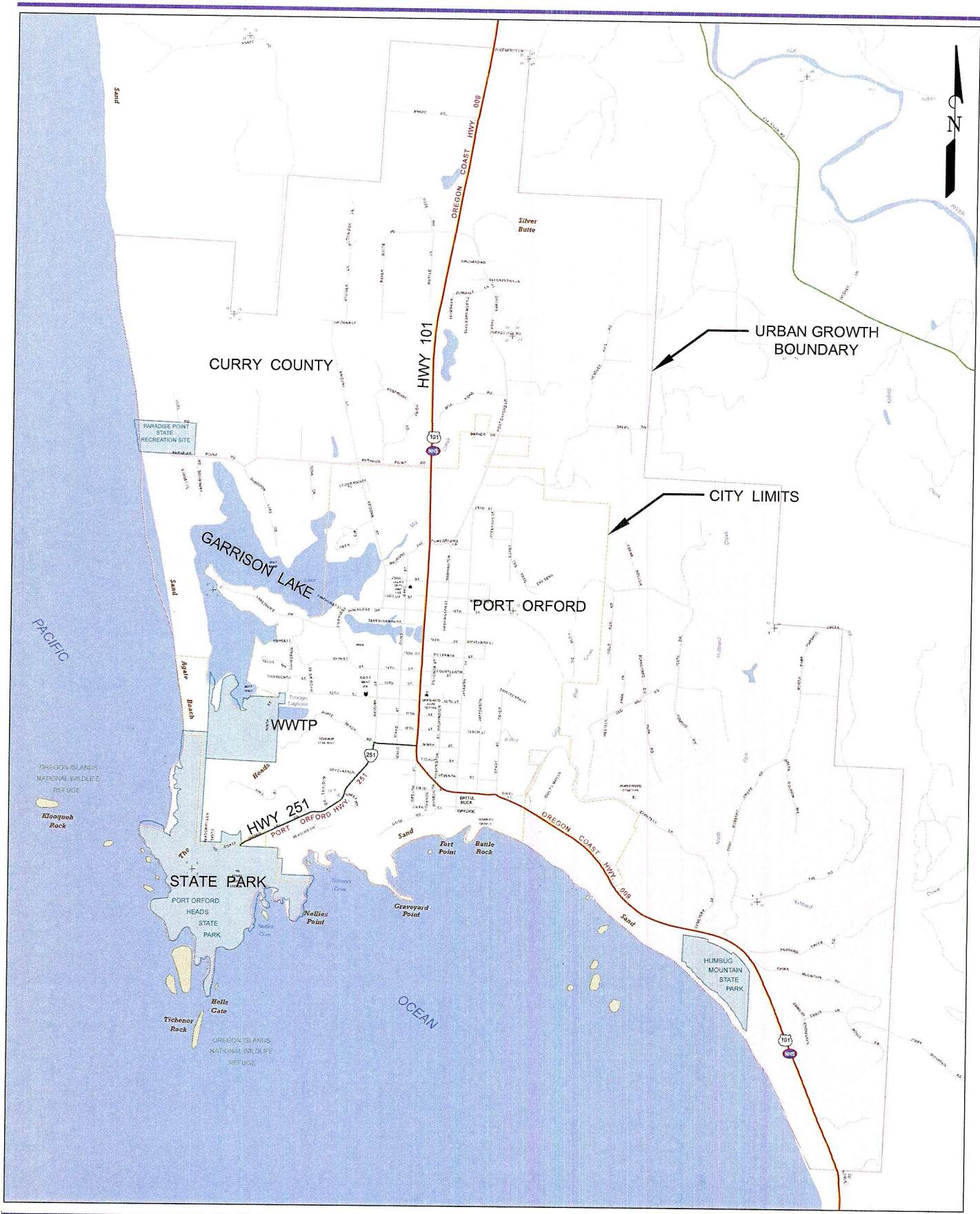
\\Dyer\dyer-part\A\Projects\97 Pacific Gales\97.01 Recycled Water Use Plan\CADD\Recycled Water Figures\Fig 1.0.dwg, 12/23/2015 3:25:44 PM



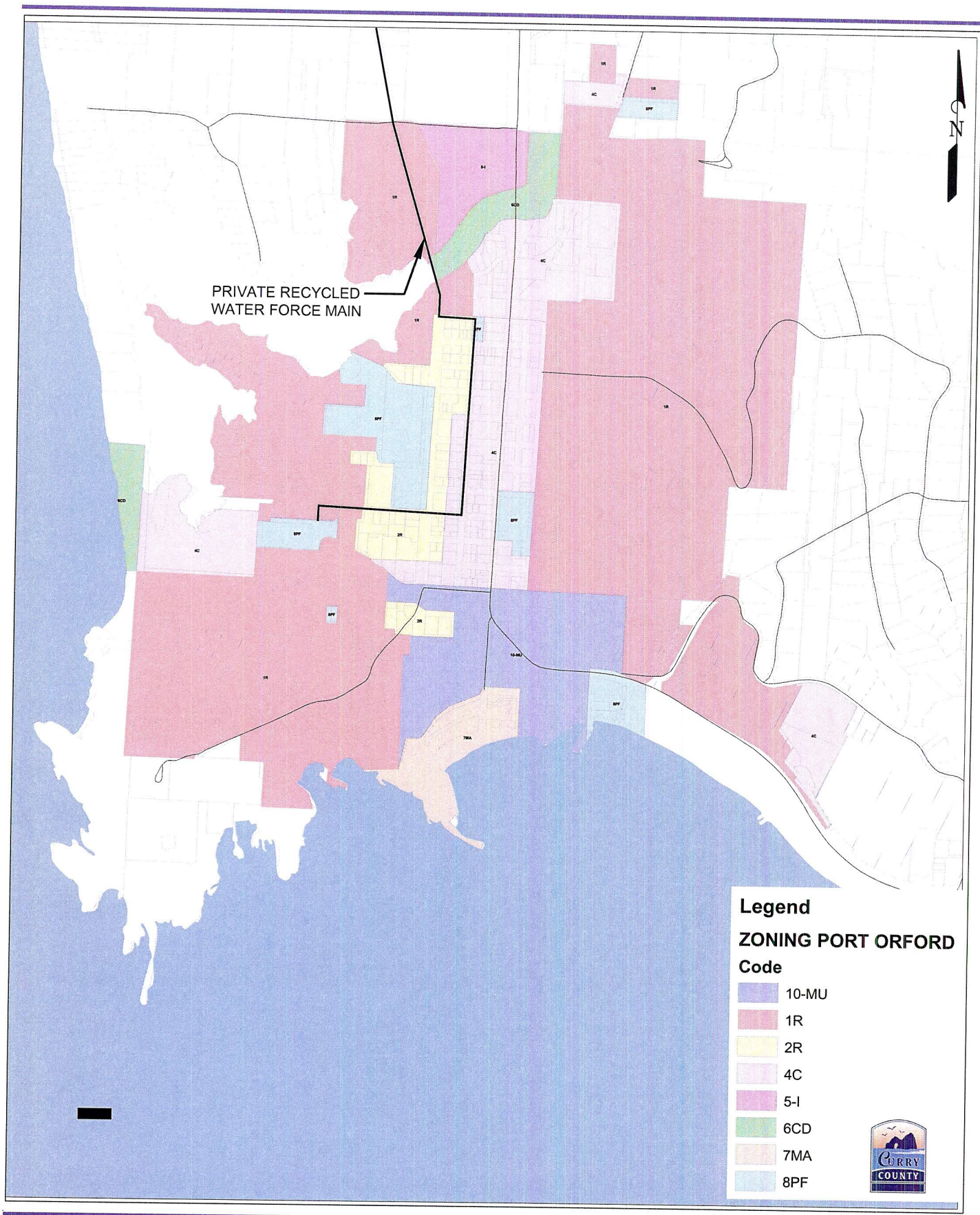
<p>THE DYER PARTNERSHIP ENGINEERS & PLANNERS, INC.</p>	<p>PACIFIC GALES GOLF COURSE CURRY COUNTY, OREGON</p>	<p>FIGURE NO.</p>
<p>DATE: DEC. 2015</p>		<p>1.0</p>
<p>PROJECT NO.: 197.01</p>		<p>WWTP RECYCLED WATER FACILITIES</p>



THE DYER PARTNERSHIP ENGINEERS & PLANNERS, INC.	PACIFIC GALES GOLF COURSE CURRY COUNTY, OREGON	FIGURE NO. 1.1
DATE: DECEMBER 2015 PROJECT NO.: 197.01		



<p>THE DYER PARTNERSHIP ENGINEERS & PLANNERS, INC.</p>	<p>City of Port Orford WASTEWATER FACILITY PLAN</p>	<p>FIGURE NO. 1.2</p>
<p>DATE: DEC. 2015</p>	<p>PLANNING AREA</p>	
<p>PROJECT NO.: 183.02</p>		



THE DYER PARTNERSHIP
 ENGINEERS & PLANNERS, INC.

DATE: DEC. 2015
 PROJECT NO.: 197.01

City of Port Orford
ZONING PLAN

FIGURE NO.
1.3